

# Centre for Development and Research



## Annual Report 2016-17

---

**Reg. Office:**

12 Madhuvan Enclave, Street No.4,  
Habsiguda, Hyderabad – 500 007.

Tele. No. 040 27178330

Web: [www.ceedeer.org](http://www.ceedeer.org)

**Field Office:**

GF-2, Alluri Block, PMRC Quarters,  
Rampachodavaram - 533 288, E.G.Dt, A.P

Tele. No: +91 8864 243043

Email : [cdr.rampachodavaram@gmail.com](mailto:cdr.rampachodavaram@gmail.com)

---



## **INDEX**

	<b>Page</b>
<b>1 Introduction</b>	<b>1</b>
<b>2 Operational Area Maps</b>	<b>2</b>
<b>3 Maa Vooru Maa Badi Programme</b>	<b>3</b>
<b>4 MVMB - Operational Area Mandal Maps</b>	<b>8</b>
<b>5 Enrollment Particulars</b>	<b>11</b>
<b>6 Learning Outcomes - 2016-17</b>	<b>12</b>
<b>7 Photographs - Maa Vooru Maa Badi</b>	<b>22</b>
<b>8 Training of Teachers of Primary Schools of ITDA</b>	
Rampachodavaram and monitoring the Learning outcomes	<b>32</b>
<b>9 Govt Primary Schools Learning Outcomes - 2016-17</b>	<b>37</b>



# Annual Report 2016-17

Centre for Development and Research (CDR) is working for the well being of the tribal People in East Godavari district since 2008. Overall objective that is to ***“Improve the quality of life of the poorest and most disadvantaged members of tribal society on a sustainable basis through community empowerment”*** in quite interior and far flung villages in Maredumilli and Y.Ramavaram Mandals. Konda Reddis, a vulnerable tribe, is the predominant section of the tribal population in this Mandals. CDR made a choice to work with the most needy of the tribals in the most remote of the district.

## **Geographical Conditions of the operational area:**

East Godavari district can be broadly classified into three natural divisions, namely, the delta, upland and agency or hill tracts. The general elevation of the district varies from a few meters near the sea to about 300 meters in the hills of the agency. The Eastern Ghats rise by gradations from the level of the coast and spread throughout the agency 11 mandals.

## **Maredumilli Mandal:**

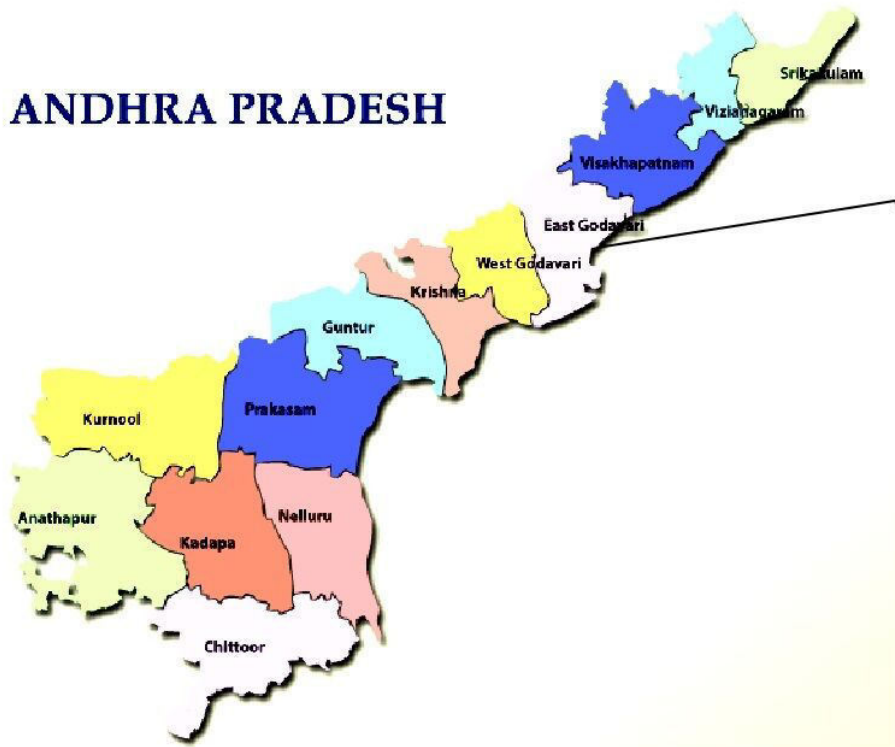
It is composed of 78 villages. It is an interior Tribal habitation with 903.44 Sq. Kms. areas bordering with Khammam District endowed with evergreen Tropical Forest and Wildlife. There are many Tribal groups living and most of them were Primitive Tribes (PTGs). Podu Cultivation, Hunting, Animal Grazing and Forest Produce Collection are the way of living. In some places very good timber, tea, rubber and coffee plantations are existing. Infrastructure like roads, buildings, electricity, health, civic amenities and education is very less in comparison.

## **Y.Ramavaram Mandal:**

Total population of Y. Ramavaram Mandal is 27,950 living in 6,549 Houses, Males are 13,587 and Females are 14,363. Y. Ramavaram consist of 148 Villages and 17 Panchayats . Kunkumamidi is the smallest Village and Donkarai is the biggest Village . It is in the 27 m elevation (altitude). Y. Ramavaram Mandal is bounded by Maredumilli Mandal towards west , Addateegala Mandal towards South, Rampachodavaram Mandal towards South, Koyyuru Mandal towards East.



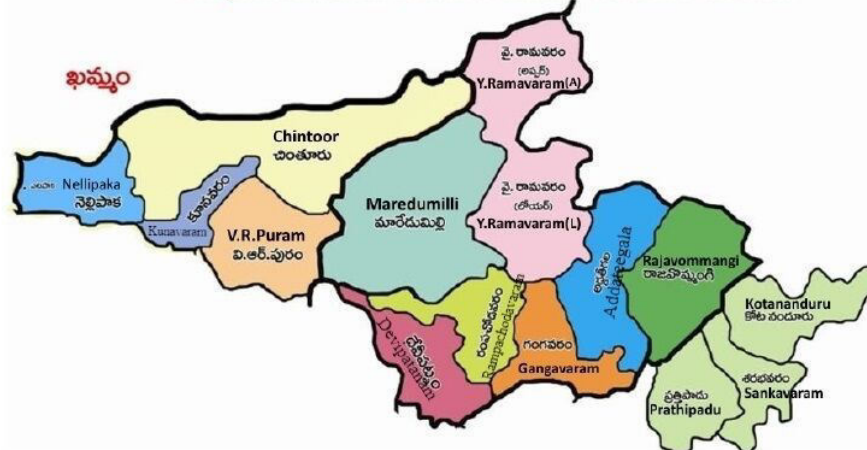
# ANDHRA PRADESH



## East Godavari District



## Rampachodavaram Division Mandals with Sub-Plan Area





## **Maa Vooru Maa Badi Programme**

CDR is the architect in designing these community governed schools. It is assisting the community of tribal mothers to run 40 pre-primary schools in as many villages for 3 to 5 year tiny tots. All these activity based schools are located in Maredumilli, Y.Ramavaram and Rampachodavaram Mandals in East Godavari District.

### **Objectives:**

- Provide best quality activity based joyful education to children between 3 to 5 years.
- Build self confidence, enthusiasm and cheer among the little children and prepare them to go the Primary school
- Schools only in tribal areas and Scheduled Caste habitations
- Every school to be entirely owned and governed by the mothers
- Establish proof of concept for delivering high quality education in community governed pre primary schools for applying the same concept to Govt. Primary schools.



## Unique Features of “Maa Vooru Maa Badi”

### 1. *Pancha Teermanalu.*

Every school is established by the community of mothers. They have to fulfill five essential pre requisites and pass the *Pancha Teermanalu*. They are

- i. Resolve to set up a school
- ii. Survey the children in prescribed age group identified for enrollment.
- iii. Identify persons suitable for teaching their children
- iv. Identify suitable place for the school.
- v. Nominate a five members School Committee of mothers.

### 2. *Nava Sutralu - Nine Responsibilities*

- i. Ensure full attendance in the school
- ii. Two mothers to participate in school activities everyday by rotation at least for one hour
- iii. Attend weekly display of articles made by children during daily session of creative activities
- iv. Invite grand parents every week for sharing their stories



- v. Conduct Badi Panduga on last Saturday of every month
- vi. Save Rs. 100 every month for every child in school
- vii. Teams of MMS members to visit every school once every month
- viii. Celebrate Birthday of the child by planting and protecting two saplings in their field
- ix. Save Rs. 10 for each pupil every month for meeting the needs of the school

### **3.Monthly visit of schools by members of Mandala Mahila Samakhya.**

- Village Organisation (VO) and the Badi Committee examine the learning outcomes achieved by the children every month.

### **4.Badi Panduga:** Monthly Public Report on Learning Outcomes

- Badi Panduga – Festival of Learning – is held in the last Saturday of every month in every school.
- All mothers and other villagers also attend.
- The Sarpanch of Gram Panchayat is also invited.
- The school teacher reports all details of the learning outcomes achieved by each pupil in the school and is discussed thoroughly.
- Parents fulfillment of Nava Sutralu during the month is also discussed.
- The salary of the teacher is authorized by school Committee only in Badi Panduga



## Joyful Education - Salient Features:

- I. Learning alphabets and numbers by song and action
- II. Learning through *kruthyam* (group activity)
- III. A rich mix of creative activities every day
- IV. Every Child grows a sapling and learns from its growth
- V. Every child learns six basic good habits for life.
- VI. Nature walks once a week
- VII. Tales from grand parents
- VIII. Story Telling

## Role of CDR:

- The concept, design and frame work for implementation of a community governed school is a seminal contribution of CDR
- CDR along with the members of VOs and MMSs selects the Teachers.
- CDR trains them in joyful teaching methodology through 7 day Foundation Course.
- CDR prepares a monthly lesson plan and trains every teacher every month for 2 days in teaching it well.
- CDR trains and ensures complete community ownership and governance by the



mothers' groups.

- Provide continuous curriculum support to all the teachers.
- CDR is responsible for monthly monitoring and ensuring quality learning outcomes and put them in public domain.

### **Curriculum Support:**

- **Teacher's Foundation Training:**
  - 7 days foundation training is provided to all the teachers in joyful and activity based teaching methodology.
- **Monthly Lesson Plan Training:**
  - 2 day advance training is provided to the teachers every month in teaching the next month's lesson plan.
- **Cluster Resource Person (CRP) Support**
  - One CRP for every 10 to 12 schools.
  - CRP will visit every school once every week to assist the teacher in delivering high quality education to pupils.
- **Monthly evaluation of learning outcomes of every child in every school.**
  - Close scrutiny of outcomes and child centric interventions
  - Best to bottom school grading in every cluster every month and taking suitable actions for improving the bottom schools



INDIA  
ANDHRA PRADESH  
MAREDUMILLI MANDAL  
EAST GODAVARI DISTRICT



CENTRE FOR DEVELOPMENT AND RESEARCH (CDR)  
Maa Vooru Maa Badi Villages

AREA : 975.43 Sq. Kms  
POPULATION : 19507  
No. OF TOWNS : Nil  
No. OF VILLAGES : 71  
DISTANCE FROM Dist.H.Qtrs.  
TO MANDAL H.Qtrs.: 126 Kms.



BOUNDARY, DISTRICT .....	
" MANDAL .....	
" VILLAGE WITH MDSS CODE .....	586598
" FOREST .....	
HEADQUARTERS, MANDAL .....	
POPULATION SIZE OF VILLAGES: BELOW 200,	
200-499, 500-999, 1000-4999	
UNINHABITED VILLAGE WITH MDSS CODE .....	586564
STATE HIGHWAY.....	SH
RIVER/STREAM .....	

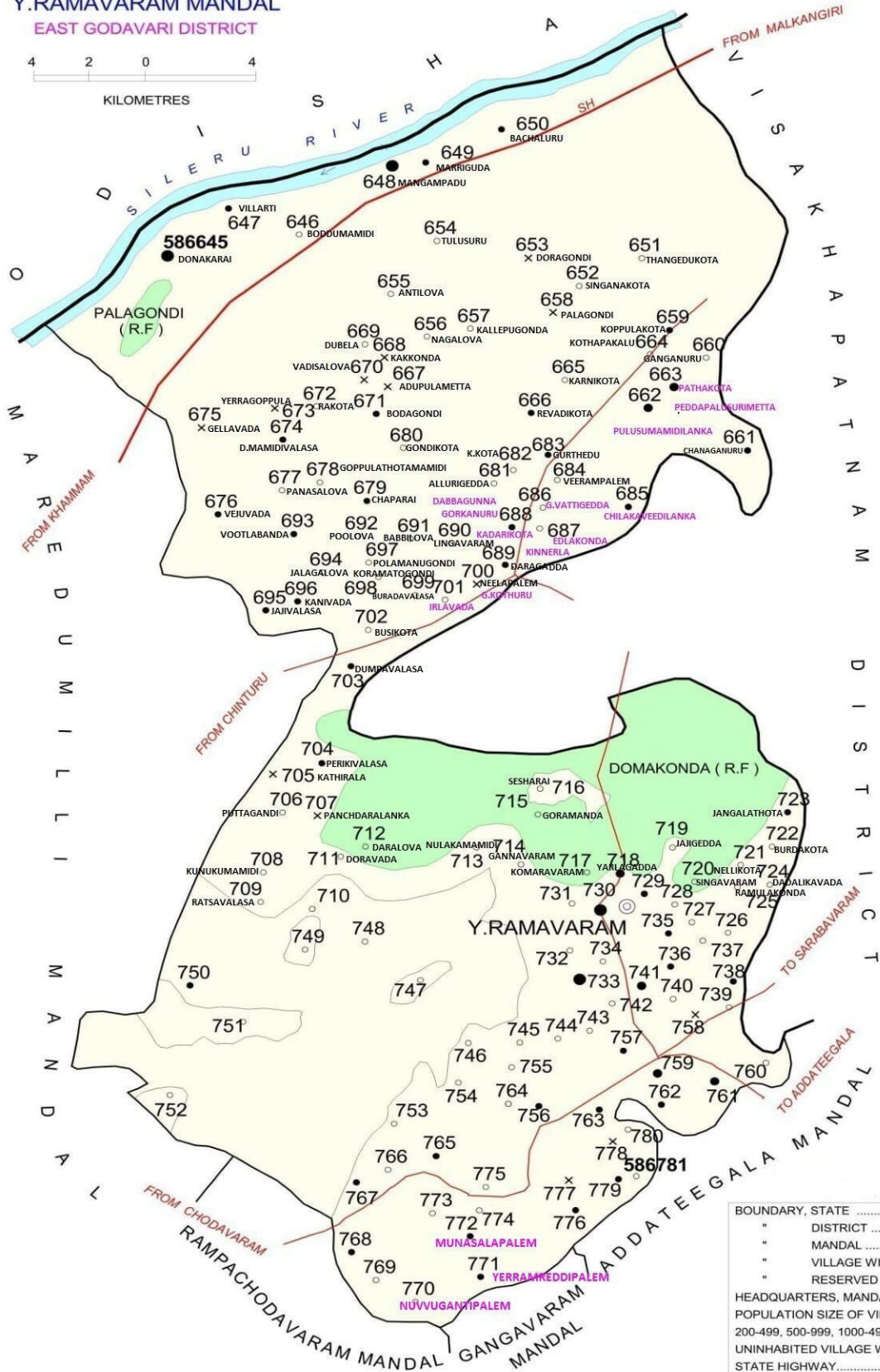


INDIA  
ANDHRA PRADESH  
Y.RAMAVARAM MANDAL  
EAST GODAVARI DISTRICT

CENTRE FOR DEVELOPMENT AND RESEARCH (CDR)  
Maa Vooru Maa Badi Villages

AREA : 911.98 Sq.Kms.  
POPULATION : 28614  
No. OF TOWNS : Nil  
No. OF VILLAGES : 137  
DISTANCE FROM Dist.H.Qtrs.  
TO MANDAL H.Qtrs. : 120 Kms.

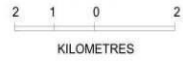
4 2 0 4  
KILOMETRES



BOUNDARY, STATE	—————
" DISTRICT	—————
" MANDAL	—————
" VILLAGE WITH MDS CODE	586781
" RESERVED FOREST	DOMAKONDA R.F.
HEADQUARTERS, MANDAL	○
POPULATION SIZE OF VILLAGES: BELOW 200,	○
200-499, 500-999, 1000-4999	●
UNINHABITED VILLAGE WITH MDS CODE	×
STATE HIGHWAY	SH
IMPORTANT METALLED ROADS	—————
RIVER/STREAM	~~~~~



INDIA  
ANDHRA PRADESH  
**RAMPACHODAVARAM MANDAL**  
EAST GODAVARI DISTRICT

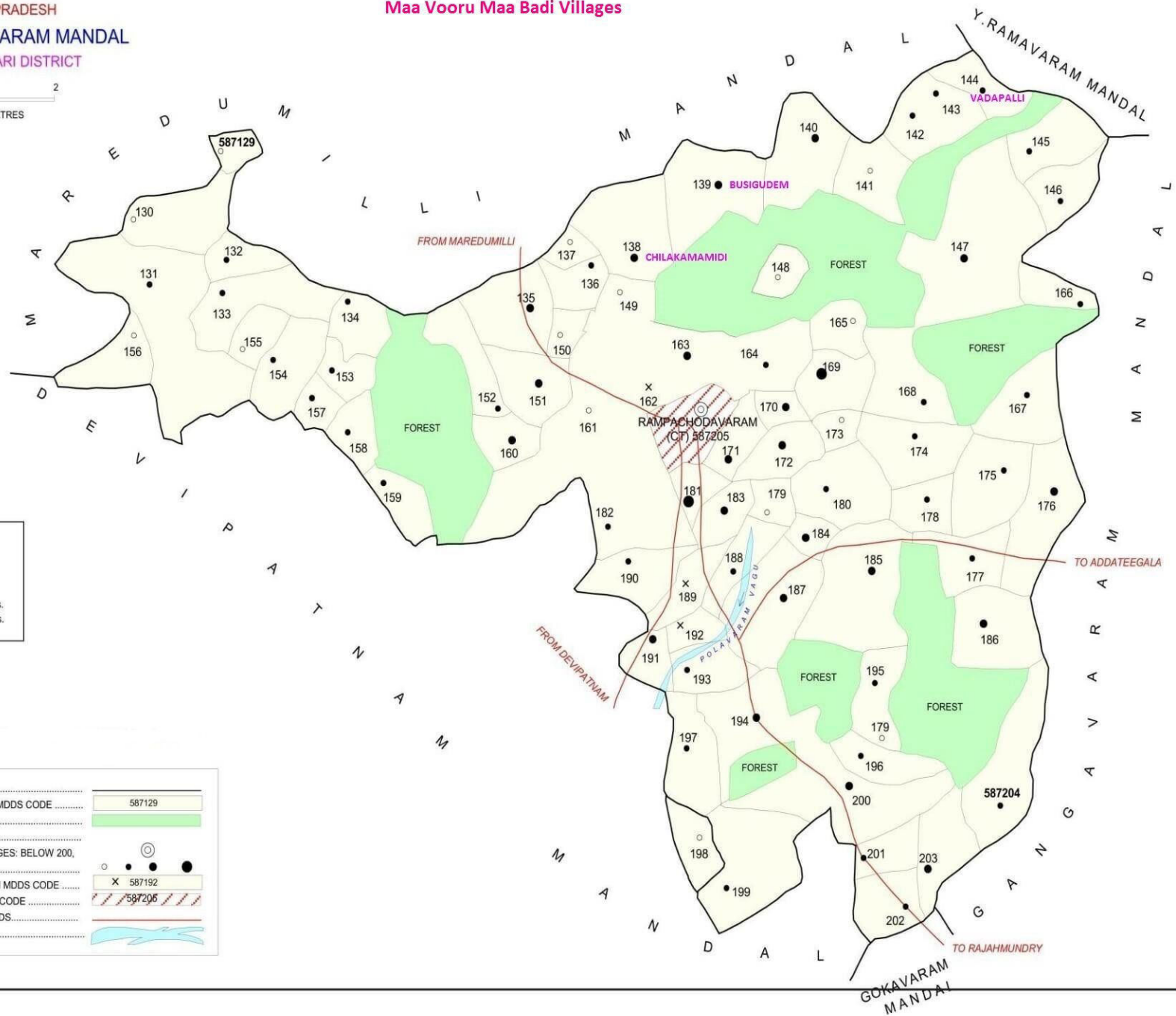


**CENTRE FOR DEVELOPMENT AND RESEARCH (CDR)**

**Maa Vooru Maa Badi Villages**

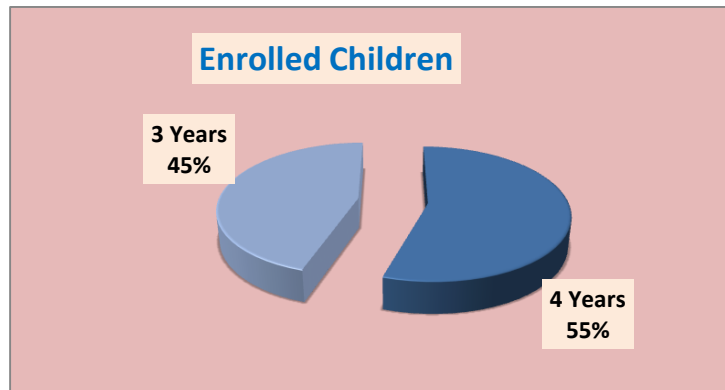
AREA : 467.99 Sq. Kms.  
POPULATION : 39351  
No. OF TOWNS : 1  
No. OF VILLAGES : 76  
DISTANCE FROM Dist.H.Qtrs.  
TO MANDAL H.Qtrs.: 89 Kms.

BOUNDARY, MANDAL .....	
* VILLAGE WITH MDDS CODE .....	587129
* FOREST .....	
HEADQUARTERS, MANDAL .....	
POPULATION SIZE OF VILLAGES: BELOW 200, 200-499, 500-999, 1000-4999 .....	○ ● ● ● ●
UNINHABITED VILLAGE WITH MDDS CODE .....	X 587192
CENSUS TOWN WITH MDDS CODE .....	587205
IMPORTANT METALLED ROADS .....	
RIVER/STREAM .....	

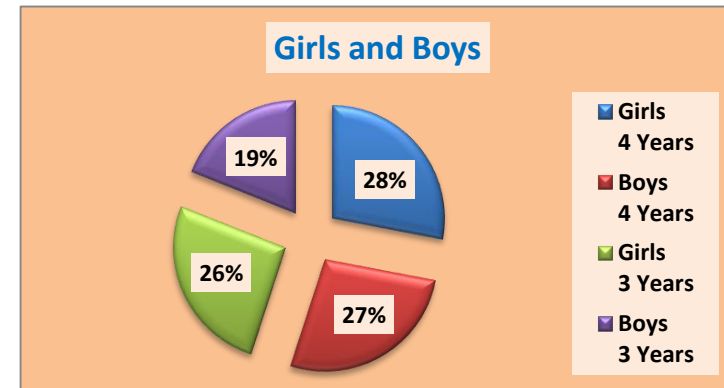




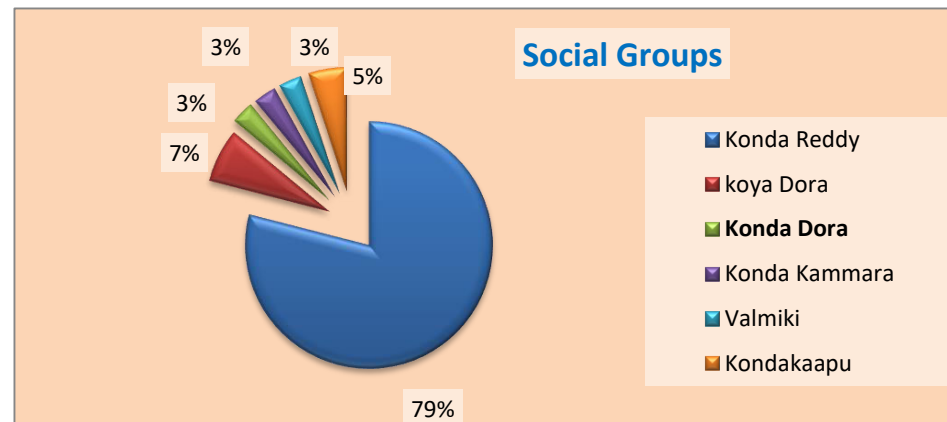
**Centre for Development and Research (CDR)**  
**Maa Vooru Maa badi - East Godavari District - 2016-17**  
**Enrollment, Girls and Boys & Social Groups**



4 Years	3 Years
55	45



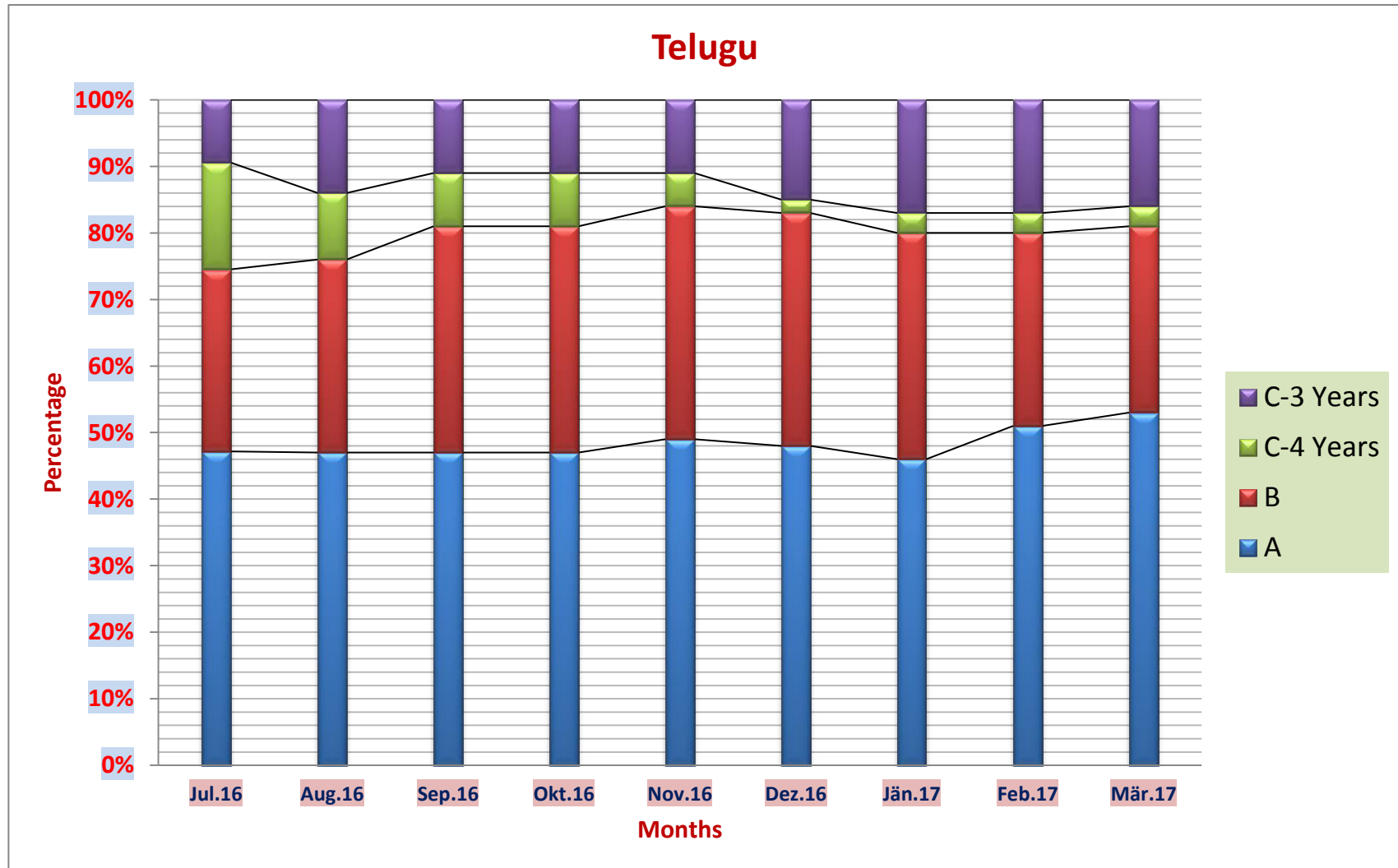
Girls 4 Years	Boys 4 Years	Girls 3 Years	Boys 3 Years
28	27	26	19



Konda Reddy	koya Dora	Konda Dora	Konda Kammara	Valmiki	Kondakaapu
79	7	3	3	3	5

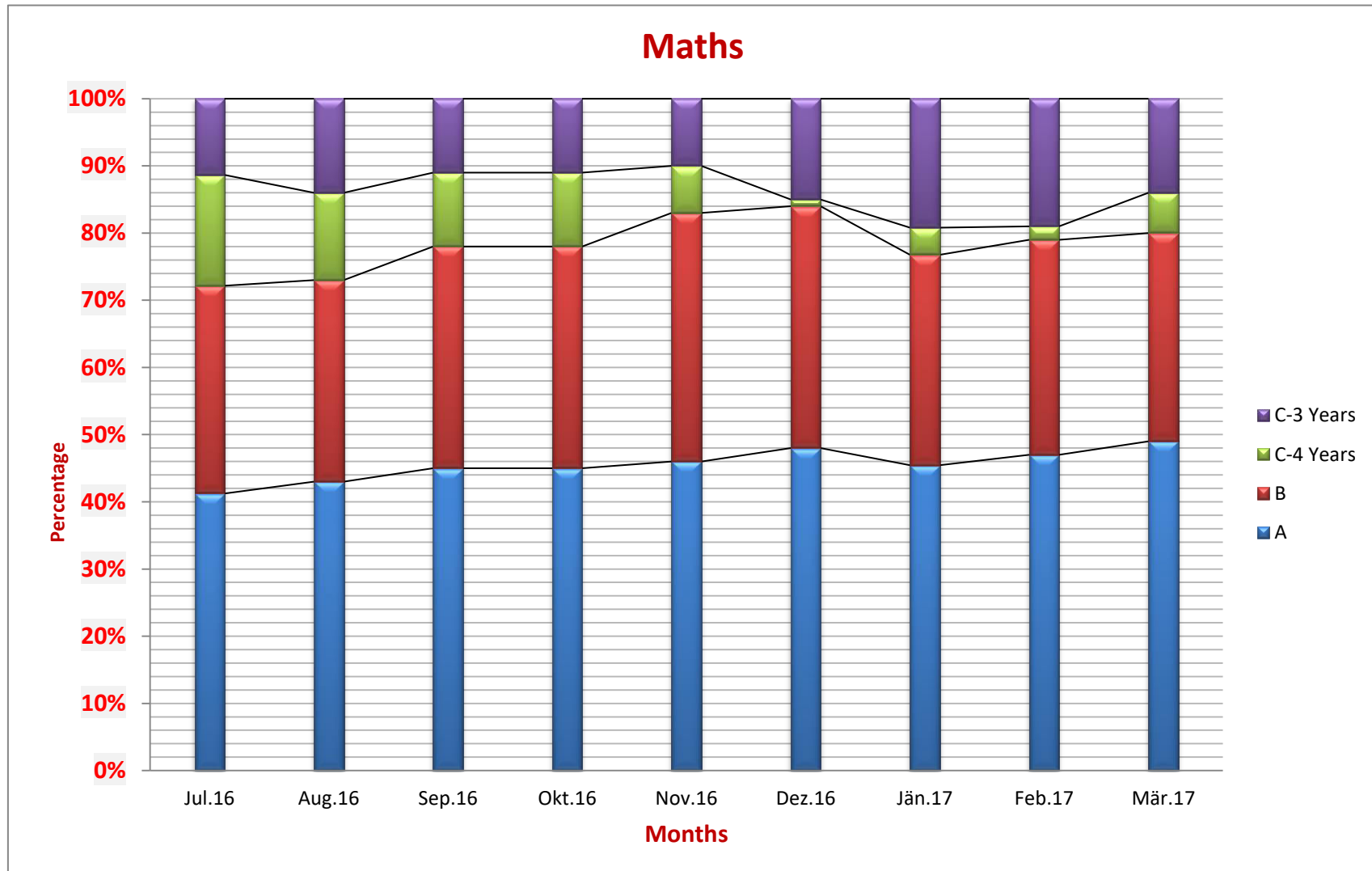


Centre for Development and Research (CDR) - East Godavari District, A.P  
Maa Vooru Maa Badi - Learning Outcomes - Year 2016-17



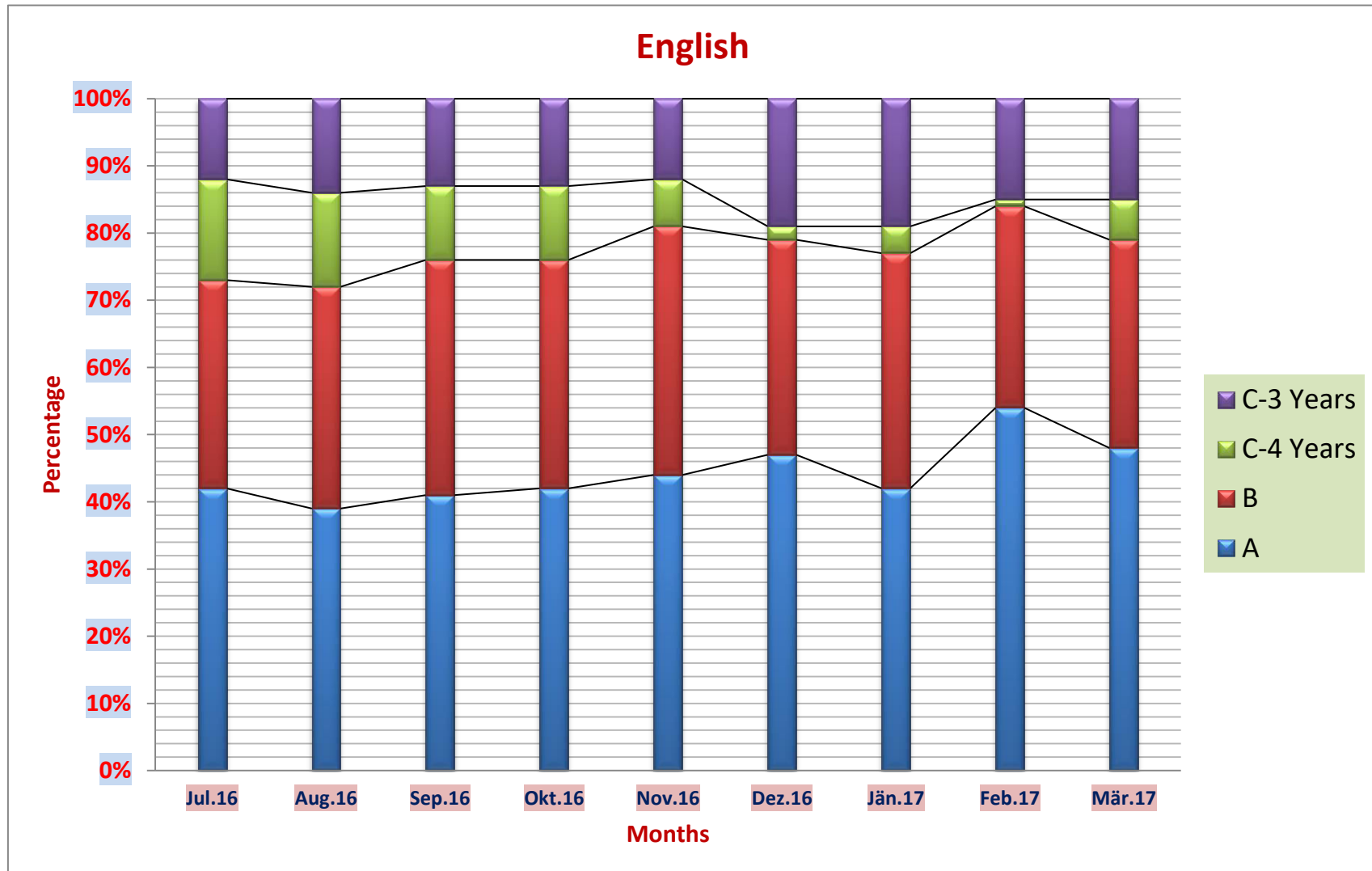


Centre for Development and Research (CDR) - East Godavari District, A.P  
Maa Vooru Maa Badi - Learning Outcomes - Year 2016-17



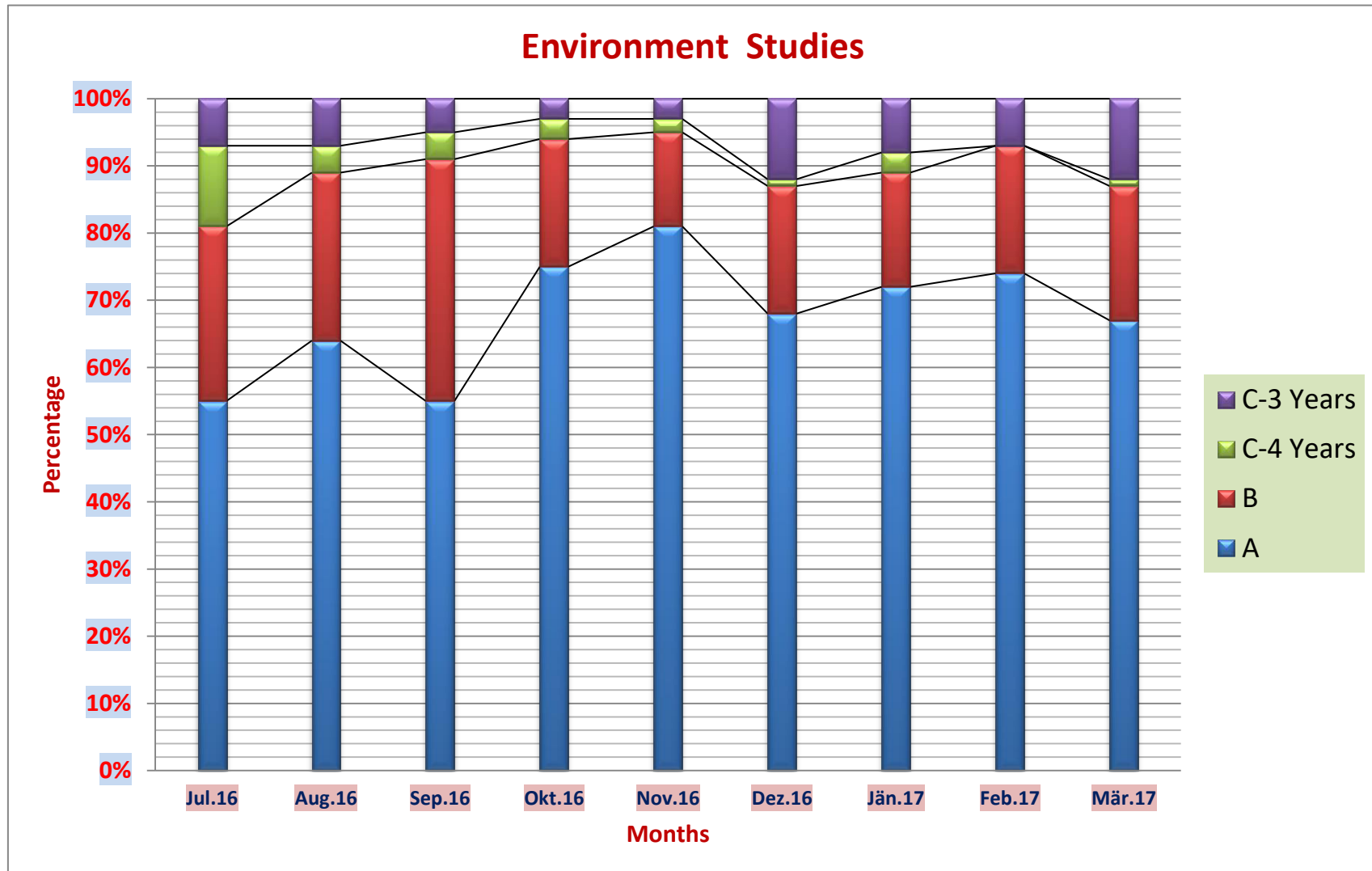


Centre for Development and Research (CDR) - East Godavari District, A.P  
Maa Vooru Maa Badi - Learning Outcomes - Year 2016-17



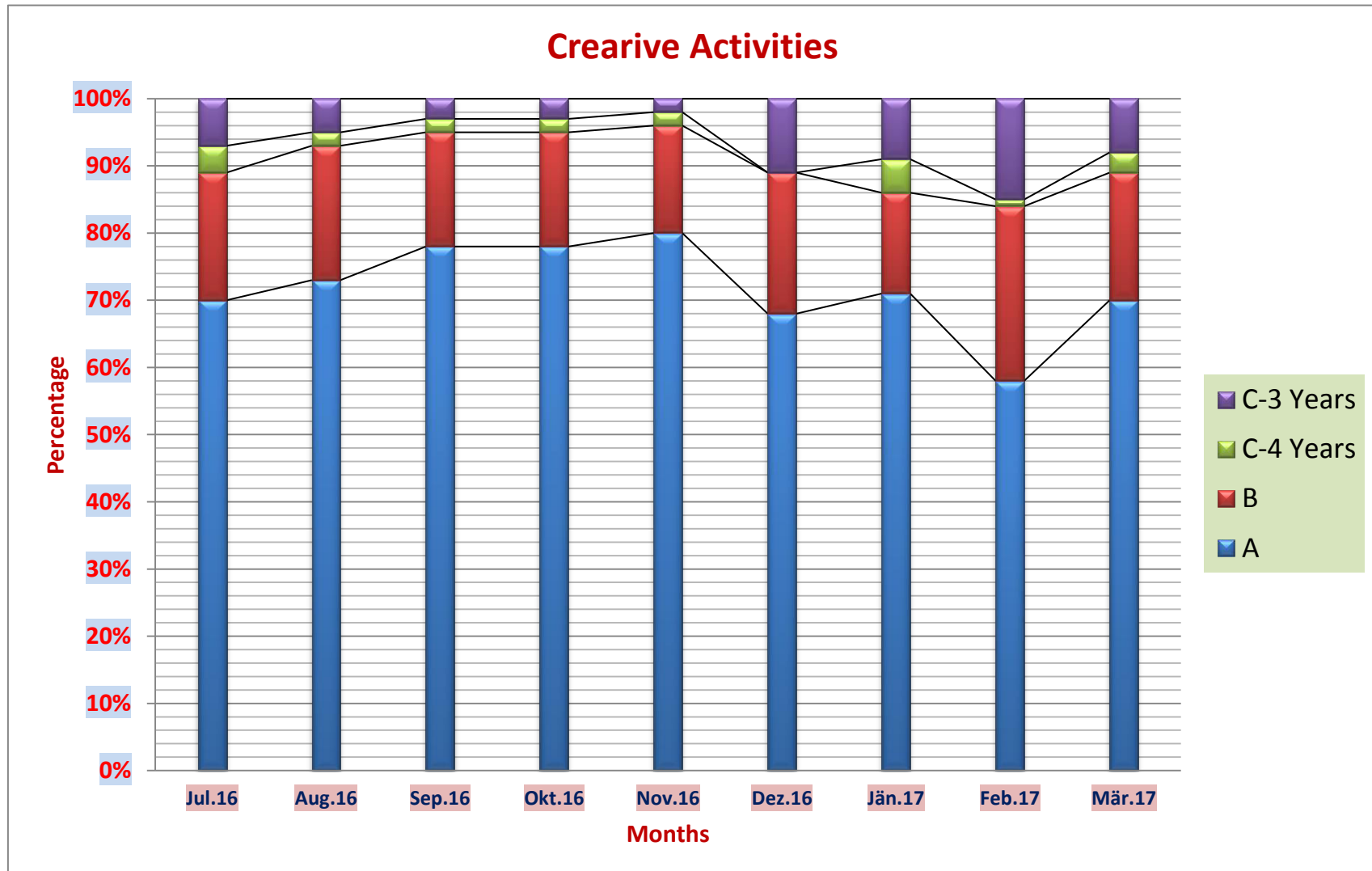


Centre for Development and Research (CDR) - East Godavari District, A.P  
Maa Vooru Maa Badi - Learning Outcomes - Year 2016-17



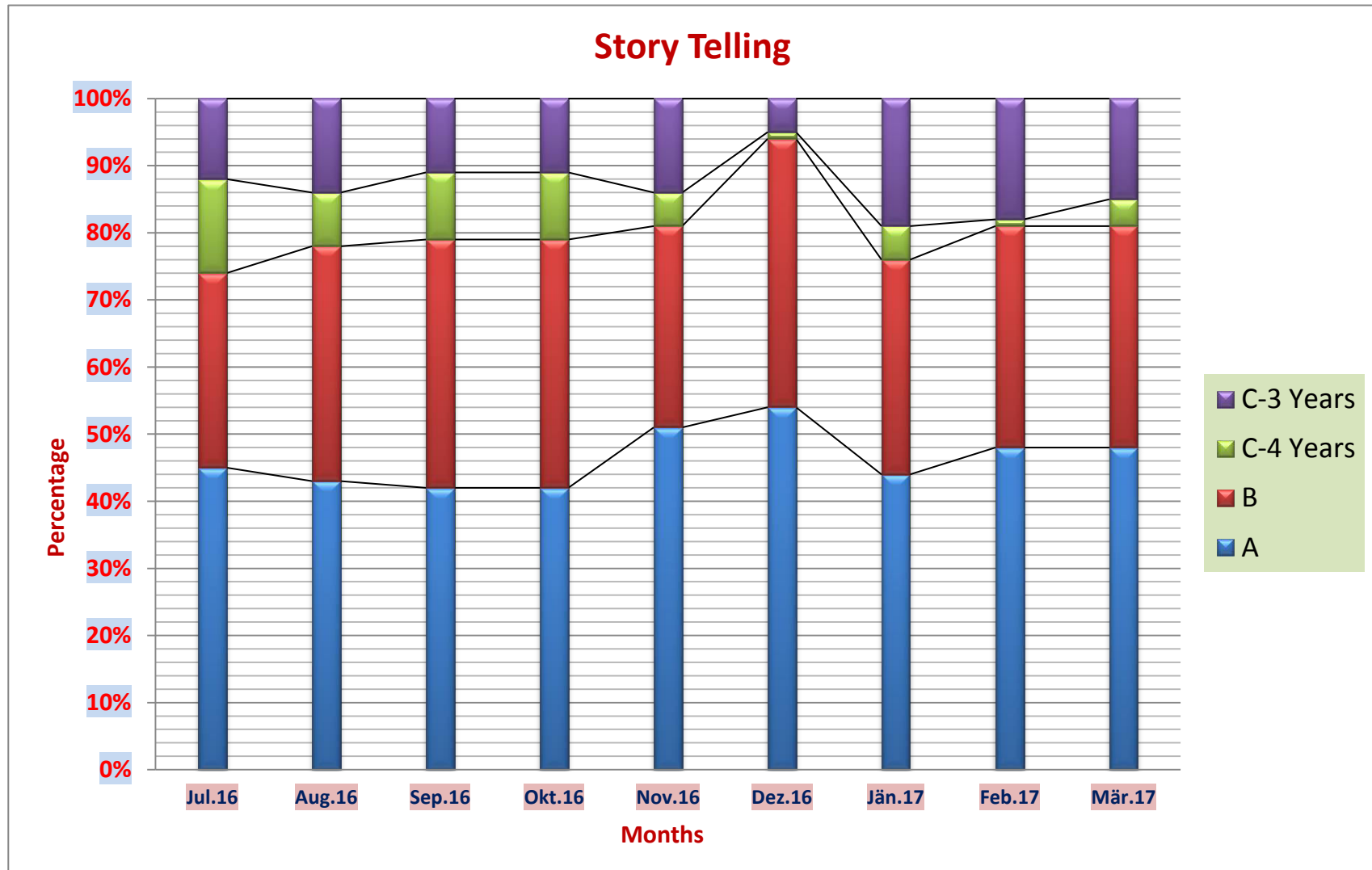


Centre for Development and Research (CDR) - East Godavari District, A.P  
Maa Vooru Maa Badi - Learning Outcomes - Year 2016-17



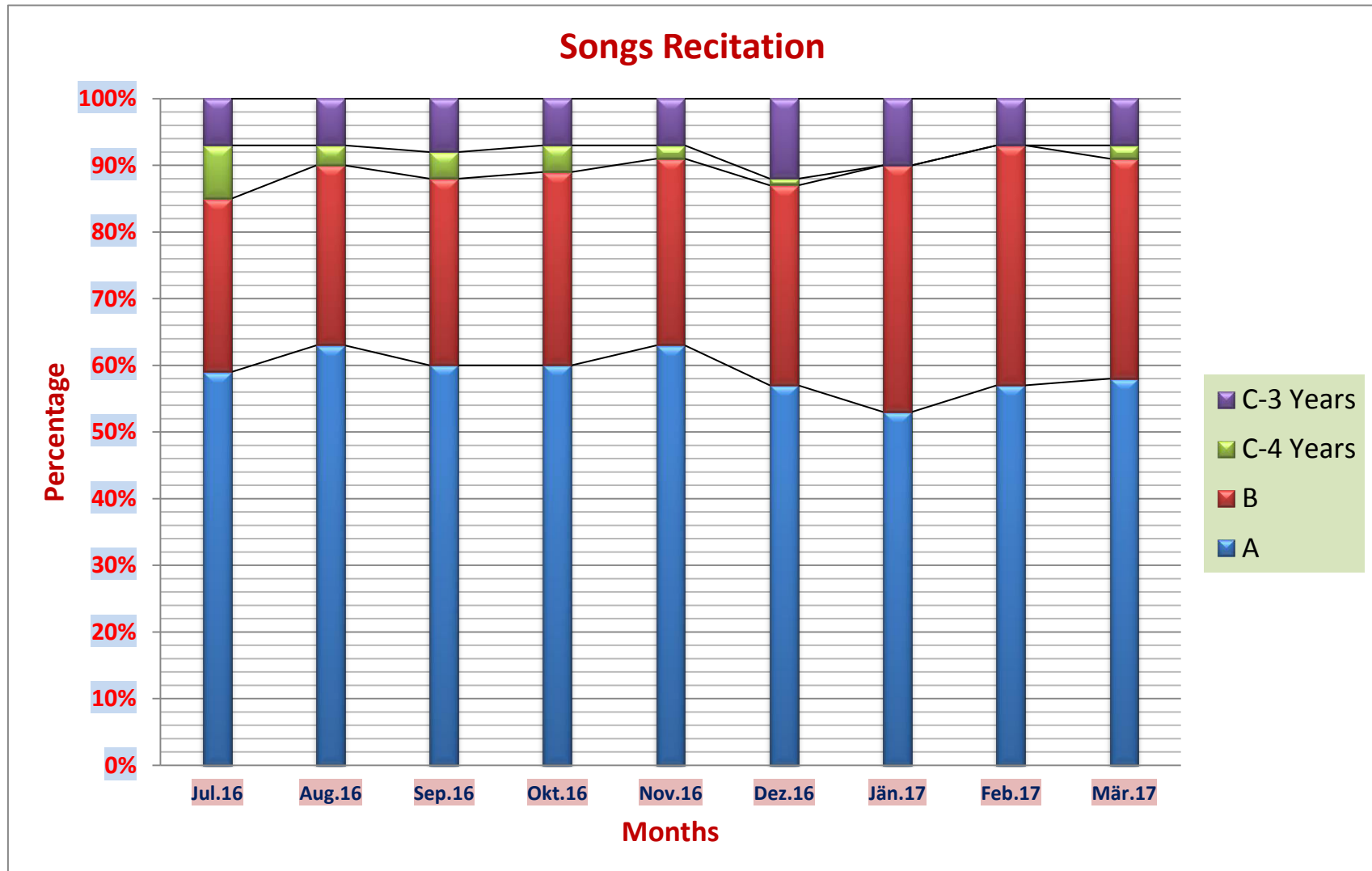


Centre for Development and Research (CDR) - East Godavari District, A.P  
Maa Vooru Maa Badi - Learning Outcomes - Year 2016-17



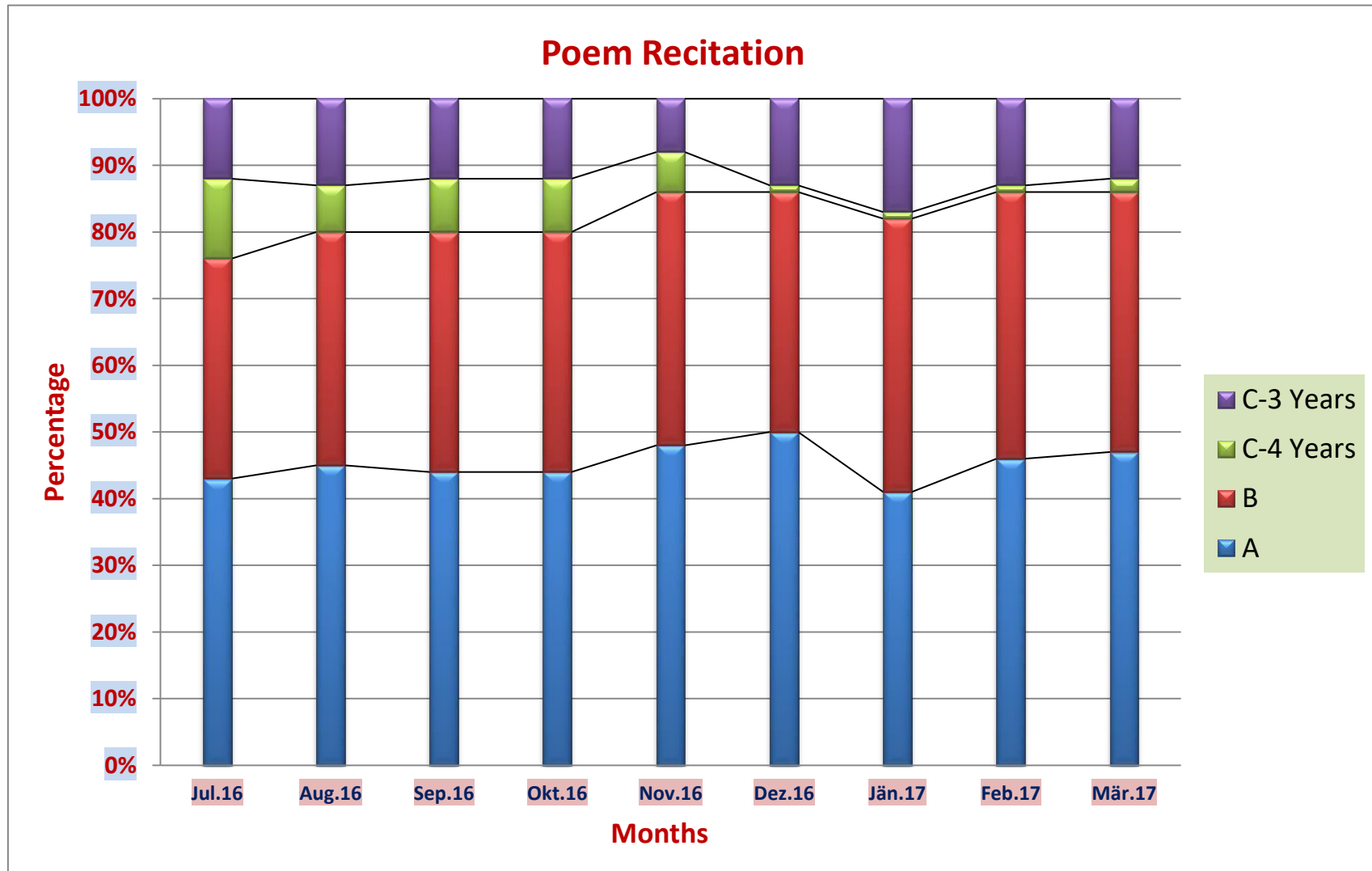


Centre for Development and Research (CDR) - East Godavari District, A.P  
Maa Vooru Maa Badi - Learning Outcomes - Year 2016-17



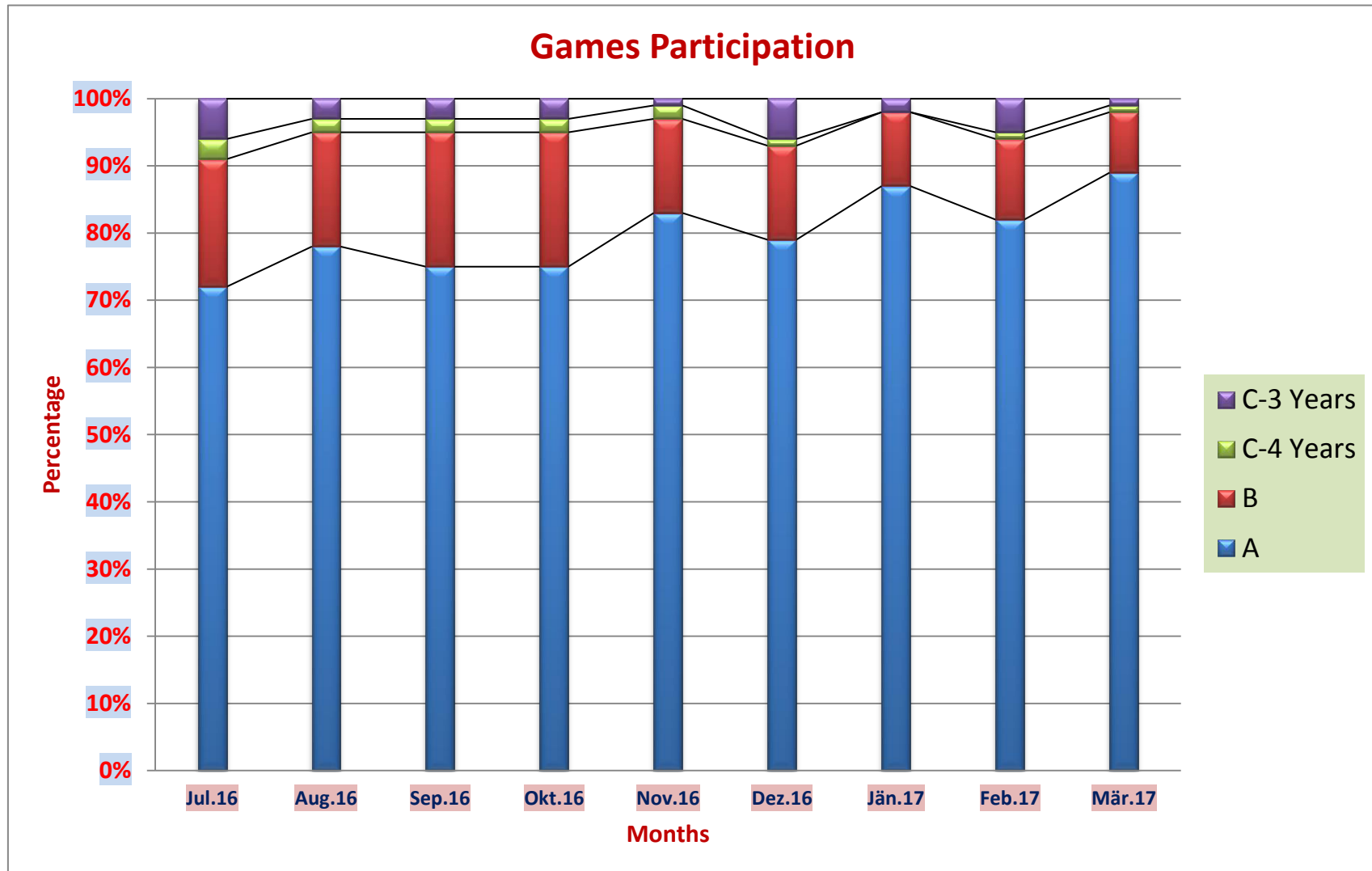


Centre for Development and Research (CDR) - East Godavari District, A.P  
Maa Vooru Maa Badi - Learning Outcomes - Year 2016-17



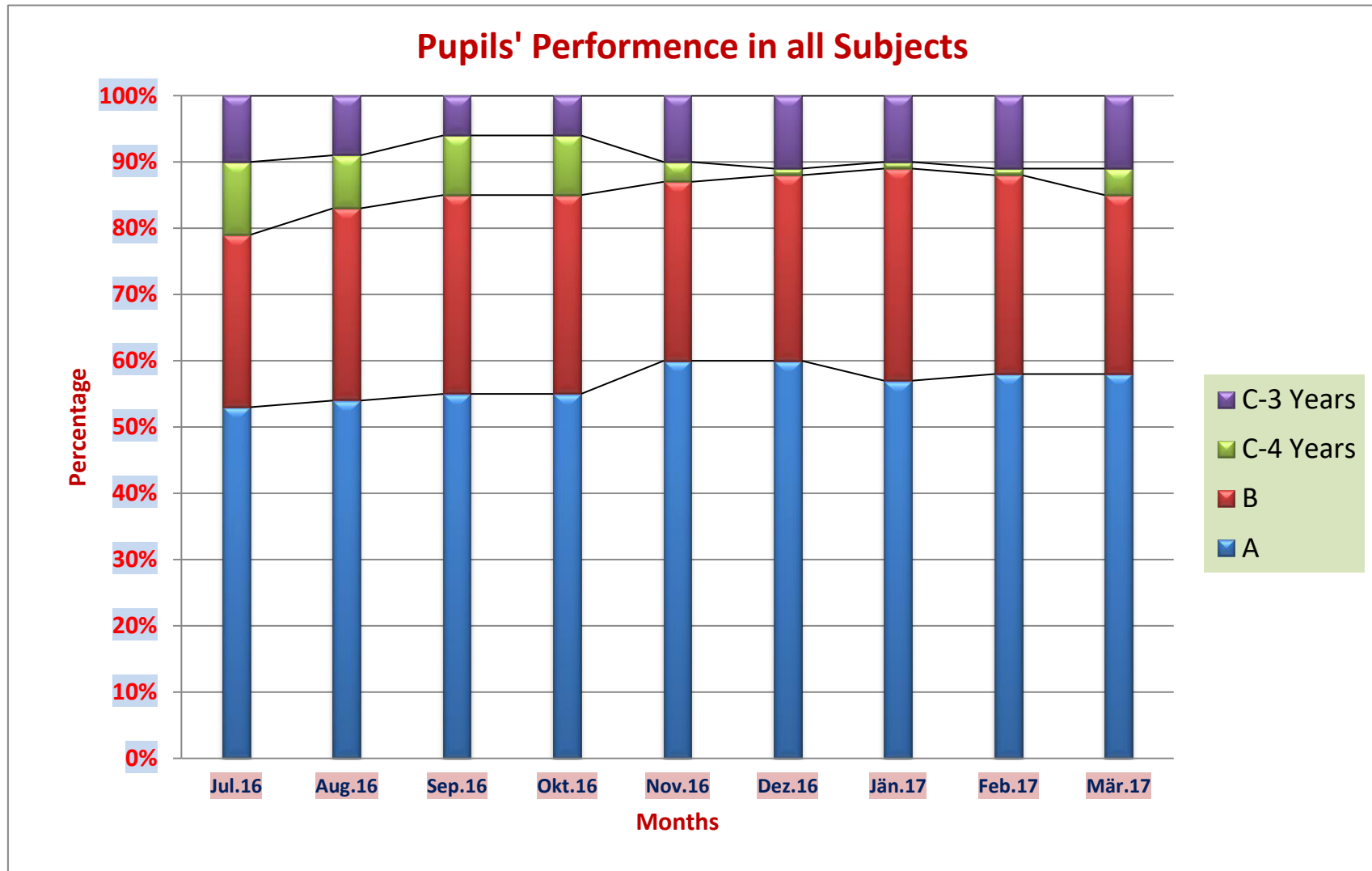


Centre for Development and Research (CDR) - East Godavari District, A.P  
Maa Vooru Maa Badi - Learning Outcomes - Year 2016-17





Centre for Development and Research (CDR) - East Godavari District, A.P  
Maa Vooru Maa Badi - Learning Outcomes - Year 2016-17





# Joyful Learning of Alphabets and Numbers



ఆంగ్లము తోరణాలలోని అక్షరాలను చదువుతున్న పి.జి.లంక బాలబడి చిన్నారులు.



తాడేపల్లి గ్రామము మా ఊరు మా బడిలో అక్షరాలపై రాళ్ళను పేరుస్తూ అక్షరాలను నేర్చుకుంటున్న చిన్నారులు.



"టీస్ట్ చెప్తాం" కృత్యంలో 6 అంకెను చెప్పున్న పూజారిపాకలు బాలబడి చిన్నారు



"తల్లి దండ్రుల మీద దయలేని పుత్తుడు" అనే వేమన పద్యాన్ని అభినయంతో చేస్తున్న నువ్వుగంటి పాలెం బాలబడి చిన్నారులు.



# Learning through kruthyam (group activity)



అక్షరాల కుర్చీ కృత్యంను ఆడుతున్న మారేడుమిల్లి -1,  
బాలబడి చిన్నారులు.



కర్ర పుల్లలతో కూడిన బావనను  
నేర్చుకుంటున్న దేవరాపల్లి బాలబడి  
చిన్నారులు.



"తీస్తే చెప్తాం" అనే కృత్యం ద్వారా తెలుగు అక్షరాలను నేర్చుకుంటున్న పాతకోట బాలబడి చిన్నారులు



రైలు బండి ఆటను ఆడుతున్న కుత్బవాడ బాలబడి చిన్నారులు.



# A rich mix of creative activities every day



మట్టిలో బొమ్మలు చేస్తున్న బూసిగూడెం గ్రామం మా ఊరు మా బడి చిన్నారులు



పూజారివాకల్లు బాలబడిలో చిన్నారులు చేసిన మట్టిబొమ్మలను చూపిస్తూ మాట్లాడిస్తున్న మారెడుమర్రి స.ఆర్.ప.



పప్పు దినుసులను జాతీయ జెండాపై అతికించాను అని చూపిస్తున్న కదల విజ్ఞేశ్వర రెడ్డి



కిన్నెర్ల గ్రామము మా ఊరు మా బడి చిన్నారుల చేత ఇసుకతో ఆకారాలు సృజనాత్మక కృత్యాలను చేయిస్తున్న టీచరు.



# Every child grows a sapling and learns from its growth



తాము పెంచుతున్న మొక్కలను గురించి తీవ్రతతో ముచ్చటిస్తున్న గుర్రమామిడి గ్రామం మా తూరు మా బడి చిన్నారులు



బంగారు బందలు గ్రామము బాలబడిలో చిన్నారులు పెంచుతున్న మొక్కలను గురించి మాట్లాడిస్తున్న తీవ్ర గారు.



మారేడుమిల్లి-1 బాలబడిలో చిన్నారులు వారు పెంచుతున్న మొక్కలను గురించి సి.ఆర్.పి.గారికి వివరిస్తున్నారు.



నర్సాపురం గ్రామము బాల బడిలో వారు పెంచుతున్న మొక్కలను గురించి సి.ఆర్.పి. గారికి వివరిస్తున్న చిన్నారులు.



# Every child learns basic good habits for life.



మంచి అలవాట్లలో భాగంగా పిల్లల గోర్లను కత్తిరిస్తున్న

భోజనానికి ముందు సబ్బుతో చేతులు కడుగుకోటూ మంచి అలవాట్లు పాటిస్తున్న  
కుట్రవాడ బాలబడి చిన్నారులు.



మంచి అలవాట్లలో భాగంగా ఉపరిగోతులు గ్రామము బాలబడిలో చిన్నారులకు గేరు కత్తిరిస్తున్న టీచరు



వరుసక్రమంలో ఆటలాడుతున్న గుర్రమామిడి గ్రామం మా ఉారు మా బడి చిన్నారులు.



# Nature walk once a week



కూరగాయల తోట ప్రకృతి సందర్శనలో భాగంగా వంకాయ మొక్కలను మరియు వంకాయలను చిన్నారులకు పరిచయం చేస్తున్న పూజారిపాకలు మా ఊరు మా బడి టీచరు



# Tales from grand parents



దేవరపల్లి మా ఊరు మా బడి చిన్నారులకు ముచ్చట్లు చెబుతున్న విద్యార్థి అమ్మమ్మ



తాడేపల్లి మా ఊరు మా బడి చిన్నారులకు కథను చెబుతున్న విద్యార్థి తల్లి



# Teacher's Foundation course Training





# Monthly Lesson Plan Training





# Uttama Badi Honouring the Teachers





**Training of Teachers of ITDA Primary Schools and  
Monitoring of Learning Outcomes in  
East Godavari Dist, Andhra Pradesh, during academic year 2016-17 .**

The Tribal Welfare Department, Government of Andhra Pradesh decided to partner with CDR for improving the quality of teaching and learning in 860 primary schools of Integrated Tribal Development Agency (ITDA), Rampachodavaram in East Godavari District.

As per the Order of Govt of AP, Tribal Welfare Department and the Memorandum of Understanding (MOU) executed with ITDA, Rampachidavaram, CDR has undertaken training of 2580 teachers of 860 ITDA and other Govt. primary schools in 13 mandals under the ITDA. More than 27,000 tribal children attend these schools. CDR has designed a 7 day training course specially for this purpose. The entire training is structured on activity based teaching methodology for joyful learning. CDR is training these teachers in batches of 60 for one week since February 2016. CDR has completed training 1440 teachers as on 18<sup>th</sup> January 2017.

The Govt. has also entrusted CDR the task of monitoring of learning outcomes in at least 25 ITDA Primary Schools in each of the 13 mandals.



**Number of Teachers trained as on 11th June 2016**  
**TRAINED TEACHERS - MANDAL WISE ABSTRACT**

Sl.N o.	Mandal	1st Batch			2nd Batch			3rd Batch			4th Batch			5th Batch			6th Batch			7th Batch			8th Batch			9th Batch			10th Batch			TOTAL			
		Male	Female	Total	Male	Female	Total	Male	Female	Total	Male	Female	Total	Male	Female	Total	Male	Female	Total	Male	Female	Total	Male	Female	Total	Male	Female	Total	Male	Female	Total	Male	Female	Total	
1	Maredumilli	3	1	4	3	1	4	4	2	6	2	0	2	7	1	8	4	2	6	11	3	14	6	2	8	3	1	4	0	0	0	43	13	56	
2	Gangavaram	3	2	5	3	2	5	0	2	2	5	0	5	1	2	3	1	1	2	1	2	3	0	0	0	5	0	5	0	0	0	19	11	30	
3	Rajavommangi	10	4	14	6	7	13	9	2	11	4	0	4	4	0	4	4	3	7	0	4	4	4	0	4	4	1	5	3	2	5	48	23	71	
4	Y.Ramavaram	3	0	3	5	1	6	9	3	12	8	0	8	4	3	7	2	0	2	9	3	12	10	1	11	4	3	7	6	1	7	60	15	75	
5	Addateegala	14	5	19	6	11	17	8	1	9	11	2	13	2	2	4	4	2	6	2	1	3	3	0	3	3	0	3	1	1	2	54	25	79	
6	Rampachodavaram	4	4	8	3	6	9	6	2	8	1	2	3	13	13	26	1	1	2	3	1	4	7	2	9	4	4	8	1	0	1	43	35	78	
7	Devipatnam	1	3	4	2	1	3	3	0	3	1	0	1	0	1	1	1	2	3	2	3	5	4	0	4	6	1	7	3	0	3	23	11	34	
8	Rajahmundry Rural	0	0	0	0	0	0	1	2	3	0	0	0	0	0	0	0	0	0	0	0	0	0	0	0	1	0	1	0	0	0	2	2	4	
9	Kakinada	0	0	0	0	0	0	1	0	1	0	0	0	0	0	0	0	2	2	0	0	0	0	0	0	0	0	0	0	0	0	1	2	3	
10	Prathipadu	1	0	1	0	0	0	0	0	0	1	0	1	0	0	0	0	0	0	2	1	3	2	2	4	2	0	2	1	0	1	9	3	12	
11	Sankavaram	1	0	1	2	0	2	0	0	0	0	1	1	0	0	0	0	0	0	1	2	3	1	1	2	1	0	1	3	0	3	9	4	13	
12	Tuni	0	0	0	0	1	1	0	1	1	0	0	0	0		0	0		0	0	0	0	0	0	0	0	0	0	0	0	0	0	2	2	
13	K.Nanduru	0	0	0	0	0	0	0	0	0	1	0	1	0	0	0	0	0	0	0	0	0	0	0	0	0	0	0	0	0	0	0	1	0	1
14	Routhalapudi	0	0	0	0	0	0	0	0	0	0	0	0	0	0	0	0	0	0	0	0	0	0	0	0	0	0	0	9	0	9	9	0	9	
15	Chninturu	0	0	0	0	0	0	0	0	0	11	1	12	5	3	8	1	1	2	3	3	6	2	0	2	3	1	4	12	0	12	37	9	46	
16	Kunavaram	0	0	0	0	0	0	0	0	0	1	0	1	0	0	0	0	0	0	0	1	1	1	1	2	1	1	2	4	0	4	7	3	10	
17	Yetapaka	0	0	0	0	0	0	0	0	0	1	0	1	0	0	0	2	0	2	0	2	2	2	3	5	2	0	2	2	0	2	9	5	14	
18	V.R.Puram	0	0	0	0	0	0	0	0	0	2	0	2	0	0	0	4	0	4	4	2	6	5	0	5	4	1	5	6	0	6	25	3	28	
	TOTAL	40	19	59	30	30	60	41	15	56	49	6	55	36	25	61	24	14	38	38	28	66	47	12	59	43	13	56	51	4	55	399	166	565	



**Number of Teachers trained as on 18th January 2017**  
**TRAINED TEACHERS - MANDAL WISE ABSTRACT**

Sl.No	Mandal	1st to 10th Batches			11th Batch			12th Batch			13th Batch			14th Batch			15th Batch			16th Batch			17th Batch			18th Batch			19 th Batch			20 th Batch			21st Batch			22nd Batch			TOTAL		
		Male	Female	Total	Male	Female	Total	Male	Female	Total	Male	Female	Total	Male	Female	Total	Male	Female	Total	Male	Female	Total	Male	Female	Total	Male	Female	Total	Male	Female	Total	Male	Female	Total	Male	Female	Total	Male	Female	Total			
1	Maredumilli	43	13	56	1	0	1	3	6	9	6	3	9	7	3	10	5	1	6	1	0	1	1	1	2	0	0	0	0	0	0	0	0	0	0	0	0	0	0	67	27	94	
2	Gangavaram	19	11	30	0	0	0	1	5	6	4	2	6	6	3	9	5	2	7	5	2	7	5	5	10	11	4	15	0	0	0	0	0	0	0	0	0	0	0	56	34	90	
3	Rajavommangi	48	23	71	5	0	5	5	1	6	2	0	2	5	4	9	7	4	11	4	8	12	22	4	26	17	1	18	0	0	0	0	0	0	0	0	0	0	0	0	115	45	160
4	Y.Ramavaram	60	15	75	4	1	5	7	0	7	0	0	0	1	4	5	0	0	0	0	0	0	4	1	5	6	0	6	0	0	0	0	0	0	0	0	0	0	0	82	21	103	
5	Addateegala	54	25	79	1	0	1	5	1	6	1	0	1	5	3	8	6	4	10	13	4	17	14	3	17	0	1	1	0	0	0	0	0	0	0	0	0	0	0	99	41	140	
6	Rampachodavaram	43	35	78	1	1	2	2	5	7	7	1	8	6	4	10	8	3	11	4	6	10	15	7	22	3	0	3	0	0	0	0	0	0	0	0	0	0	0	89	62	151	
7	Devipatnam	23	11	34	0	1	1	5	2	7	5	4	9	6	4	10	7	3	10	12	3	15	1	0	1	1	0	1	0	0	0	0	0	0	0	0	0	0	0	60	28	88	
8	Rajahmundry Rural	2	2	4	0	1	1	0	0	0	0	0	0	0	0	0	0	0	0	0	0	0	0	0	0	0	0	0	0	0	0	0	0	0	0	0	0	0	2	3	5		
9	Kakinada	1	2	3	0	0	0	0	0	0	0	0	0	0	0	0	0	0	0	0	0	0	0	0	0	0	0	0	0	0	0	0	0	0	0	0	0	0	1	2	3		
10	Prathipadu	9	3	12	1	0	1	0	0	0	0	0	0	0	0	0	0	0	0	0	0	0	0	0	0	0	0	0	0	0	0	0	0	0	0	0	0	0	10	3	13		
11	Sankavaram	9	4	13	0	0	0	0	0	0	0	0	0	0	0	0	0	0	0	0	0	0	0	0	0	0	0	0	0	0	0	0	0	0	0	0	0	0	9	4	13		
12	Tuni	0	2	2	0	2	2	0	0	0	0	0	0	0	0	0	0	0	0	0	0	0	0	0	0	0	0	0	0	0	0	0	0	0	0	0	0	0	0	4	4		
13	K.Nanduru	1	0	1	1	0	1	0	0	0	0	0	0	0	0	0	0	0	0	0	0	0	0	0	0	0	0	0	0	0	0	0	0	0	0	0	0	0	2	0	2		
14	Routhalapudi	9	0	9	3	0	3	0	0	0	0	0	0	0	0	0	0	0	0	1	0	1	0	0	0	0	0	0	0	0	0	0	0	0	0	0	0	0	13	0	13		
15	Chninturu	37	9	46	0	1	1	3	2	5	0	0	0	0	0	0	0	0	0	0	0	0	0	0	0	0	0	0	7	5	12	0	0	0	27	15	42	57	99	156	131	131	262
16	Kunavaram	7	3	10	0	0	0	1	5	6	0	0	0	0	0	0	0	0	0	0	0	0	0	0	0	0	0	0	8	4	12	0	0	0	3	4	7	0	0	0	19	16	35
17	Yetapaka	9	5	14	1	0	1	1	4	5	0	0	0	0	0	0	0	0	0	0	0	0	0	0	0	0	0	8	7	15	0	0	0	7	8	15	0	0	0	26	24	50	
18	V.R.Puram	25	3	28	1	0	1	2	3	5	0	0	0	0	0	0	0	0	0	0	0	0	0	0	0	0	0	7	2	9	0	0	0	9	7	16	0	0	0	44	15	59	
19	Diet Students	0	0	0	0	0	0	0	0	0	0	0	0	0	0	0	0	0	0	0	0	0	0	0	0	0	0	0	0	0	57	40	97	0	0	0	0	0	0	57	40	97	
20	MEO's & CRPs	0	0	0	0	0	0	0	0	0	0	0	0	0	0	0	0	0	0	0	0	0	0	0	0	0	0	0	0	0	0	0	0	0	48	10	58	48	10	58			
	TOTAL	399	166	565	19	7	26	35	34	69	25	10	35	36	25	61	38	17	55	40	23	63	62	21	83	38	6	44	30	18	48	57	40	97	46	34	80	105	109	214	930	510	1440



## Govt Primary School Teachers Activity Based Training Programme.





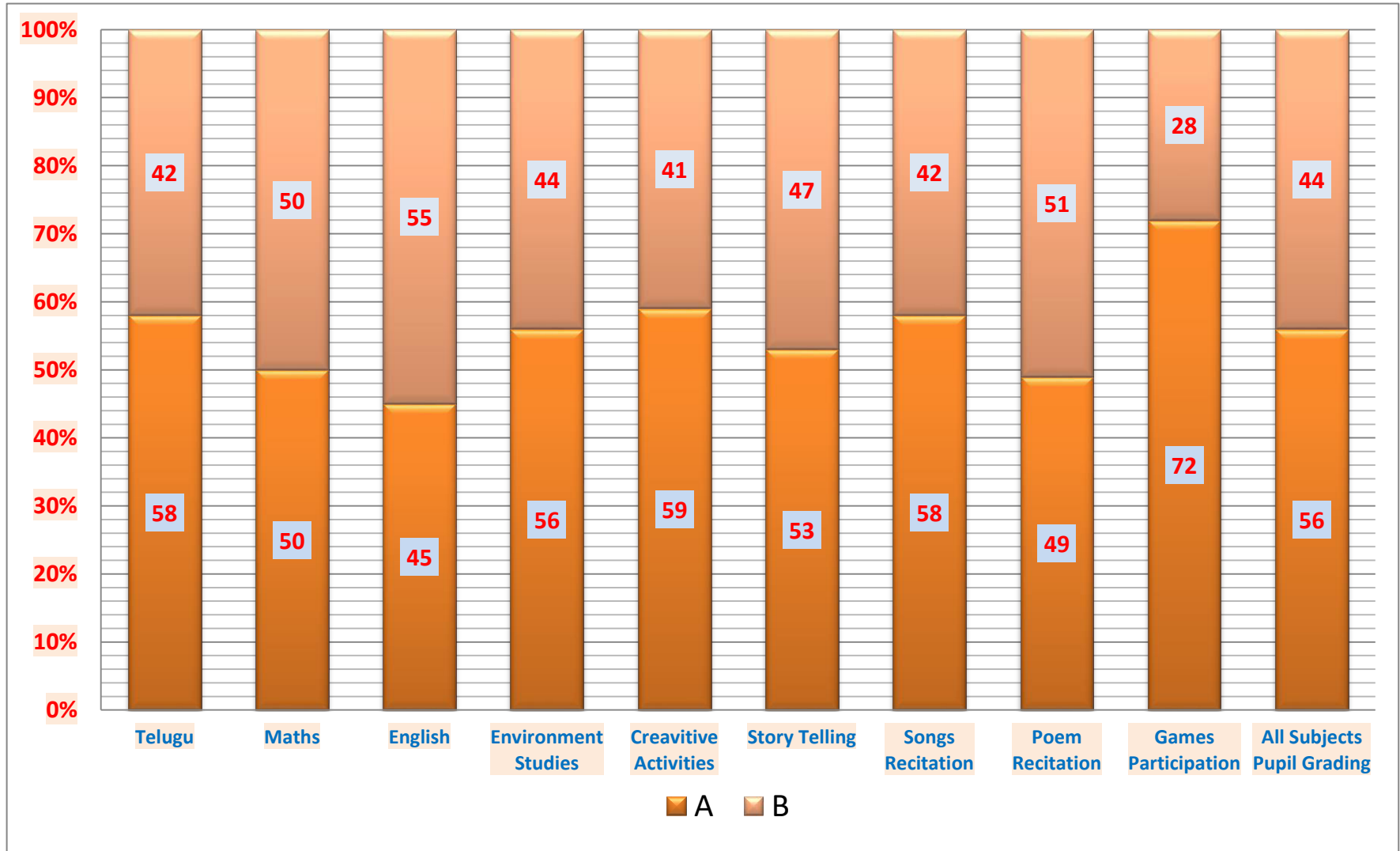
## Govt Primary School Teachers Activity Based Training Programme.





## Govt Primary Schools Monitoring - Year 2016-17

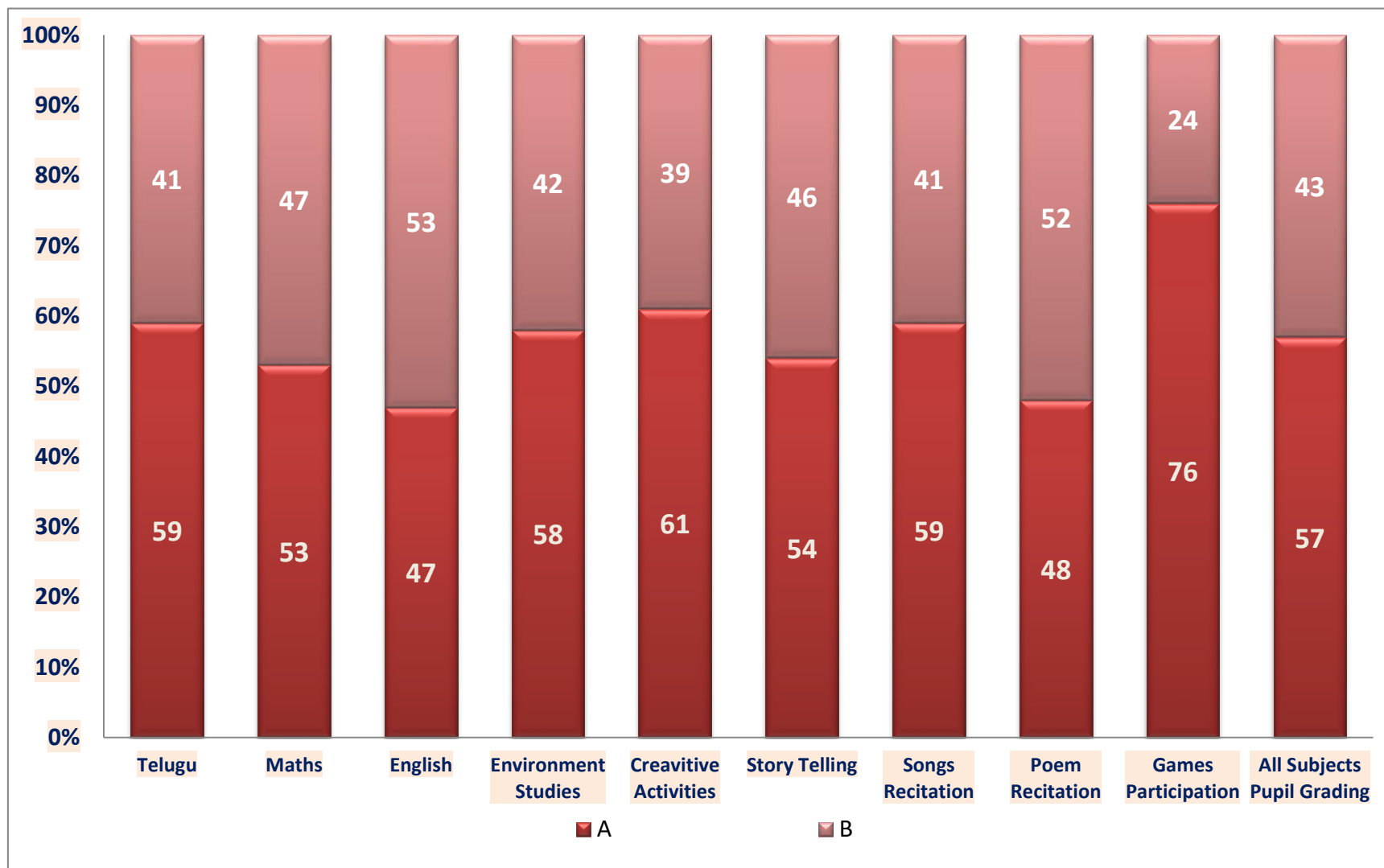
### Learning Outcomes - 1st Class





## Govt Primary Schools Monitoring - Year 2016-17

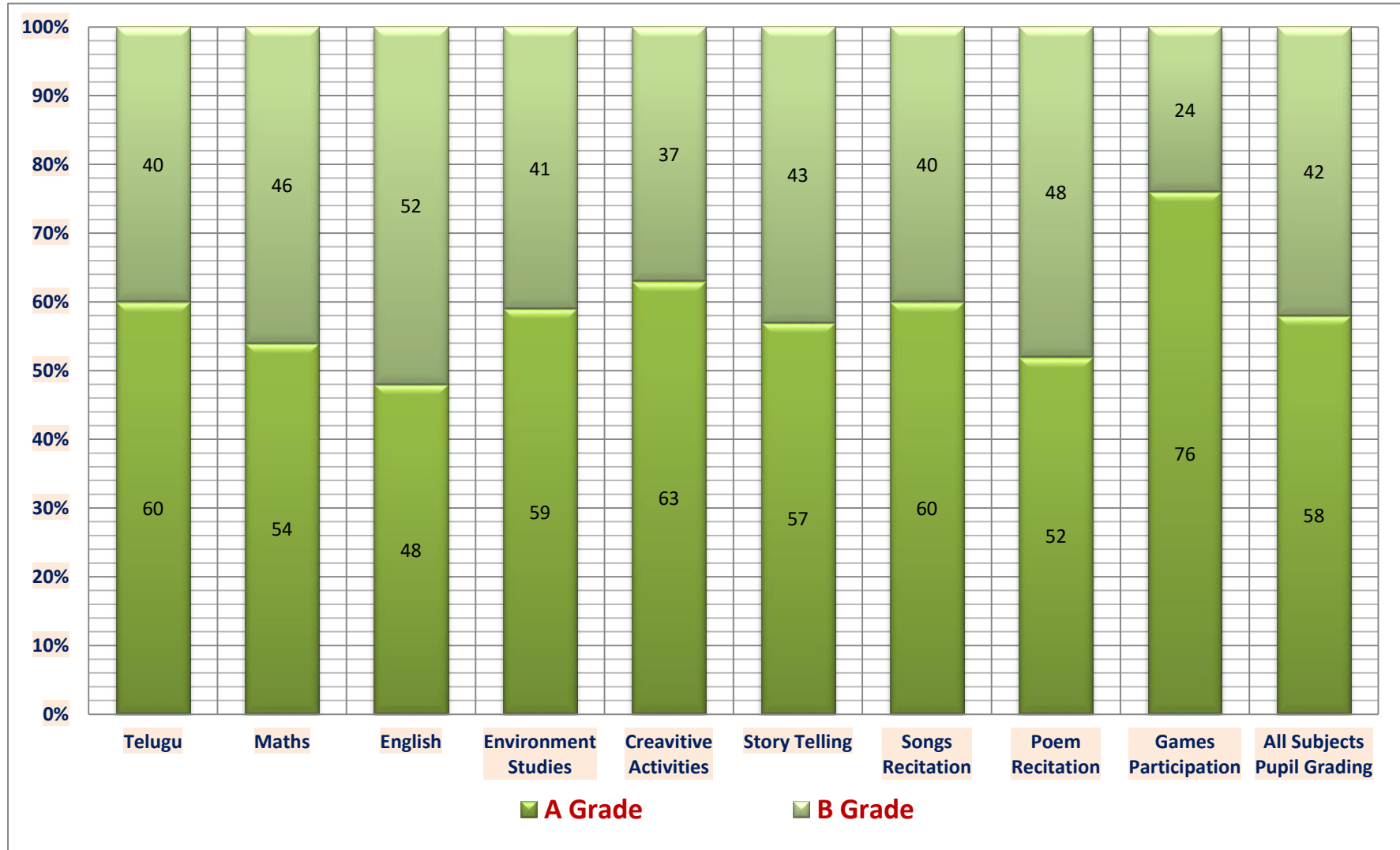
### Learning Outcomes - 2nd Class





## Govt Primary Schools Monitoring - Year 2016-17

### Learning Outcomes - 3rd Class





# Govt Primary School Activity Based Teaching Methods

